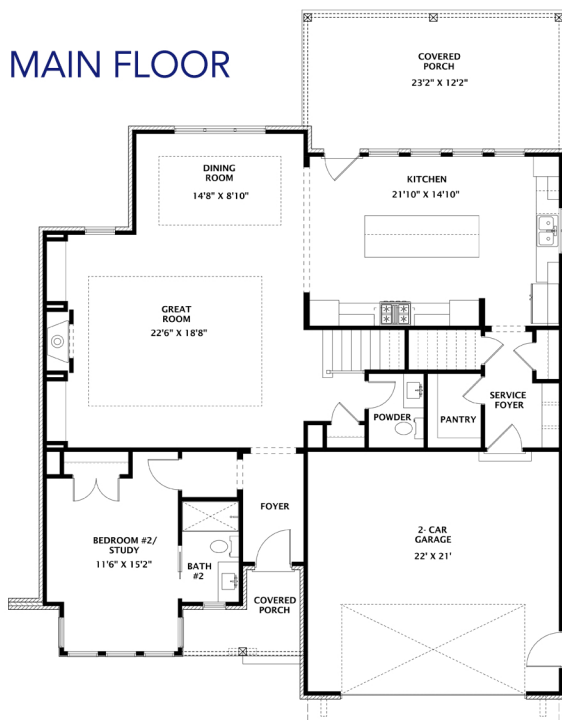


SPARROW

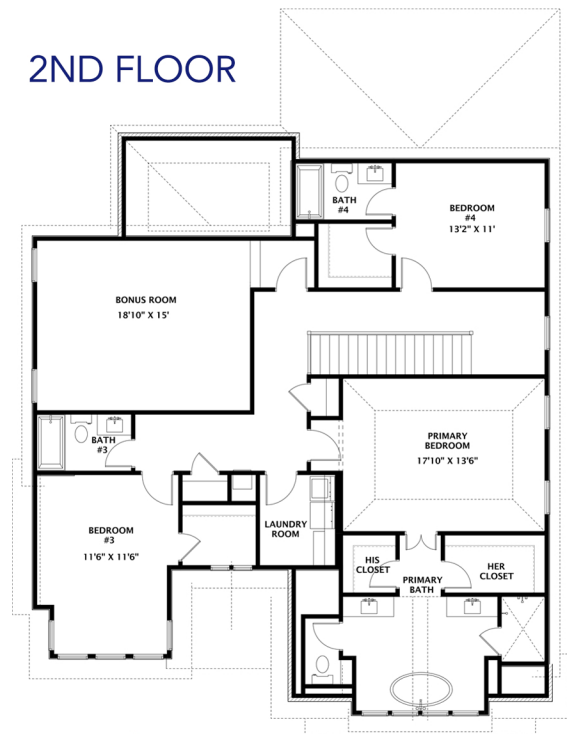
Two Story
3274 Sq. Ft.
4 Bed • 4.5 Bath



MAIN FLOOR



2ND FLOOR



- Welcome to this two-story home that offers everybody their own space and more.
- The large open concept plan allows gathering of friends and family into a cozy and comfortable space.
- Cabinetry abounds in the center island kitchen with premium cabinets, high-end appliances, quartz countertops, and a walk-in pantry.
- A guest suite/study is located on the main floor.
- Upstairs you will find the Primary Retreat with separate walk-in closets, separate vanities, freestanding tub, and lovely walk-in shower.
- Also, upstairs are two additional bedrooms, 2 full baths, laundry, and a bonus room.
- A prime Hardin Valley location means quick access to countless restaurants, breweries, retail, parks and recreation.



Brian Shelby
Realtor®

10255 Kingston Pike • Knoxville, TN 37922
(o) 865.693.3232 • (c) 865.414.5347
bnshelby71@gmail.com
License # 327468

