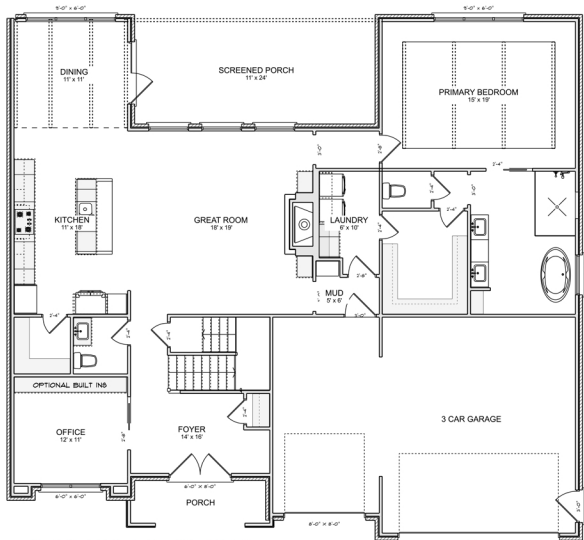




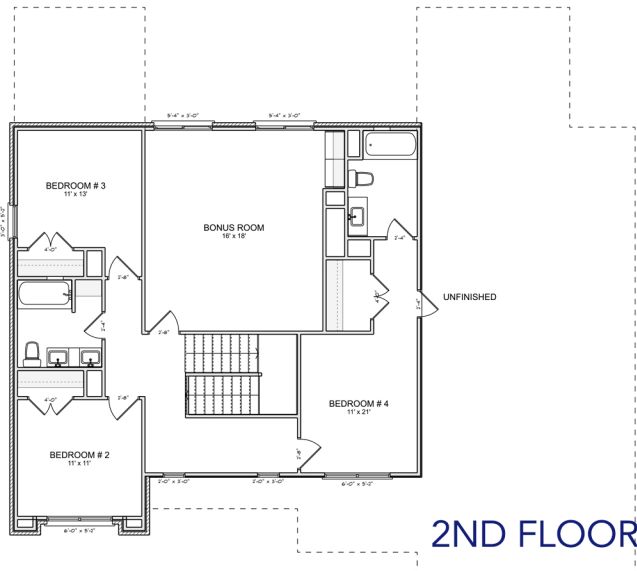
BUCKHAVEN



OWNER'S SUITE ON MAIN
3169 Sq. Ft. • 4 Bed • 3.5 Bath



MAIN FLOOR



2ND FLOOR

- Welcome to the home that offers everything you want in a location simply hard to beat.
- Memories are sure to be created in the large great room relaxing by the fire or enjoying the cool breeze on the extra-large covered porch.
- A main floor home office just off the foyer wows with a coffered ceiling and large French doors.
- The center island kitchen offers a lovely mix of premium cabinetry and open shelving, quick access to the walk-in pantry, and a perfect spot for a coffee bar if you choose.
- The main floor Owner's Retreat provides the perfect escape, with a bathroom that is styled to create a blissful experience, a large walk-in shower and a free-standing soaking tub.
- Heading in from the garage you'll find the laundry room and drop zone with a barn door hiding anything out of place.
- Upstairs is a guest suite, 2 additional bedrooms sharing a bath with double vanity, and a bonus room as large as the great room downstairs.
- Prime Hardin Valley location with great schools and close proximity to restaurants, breweries, retail, parks and recreation.



Brian Shelby
Realtor®

10255 Kingston Pike • Knoxville, TN 37922
(o) 865.693.3232 • (c) 865.414.5347
bnshelby71@gmail.com
License # 327468

