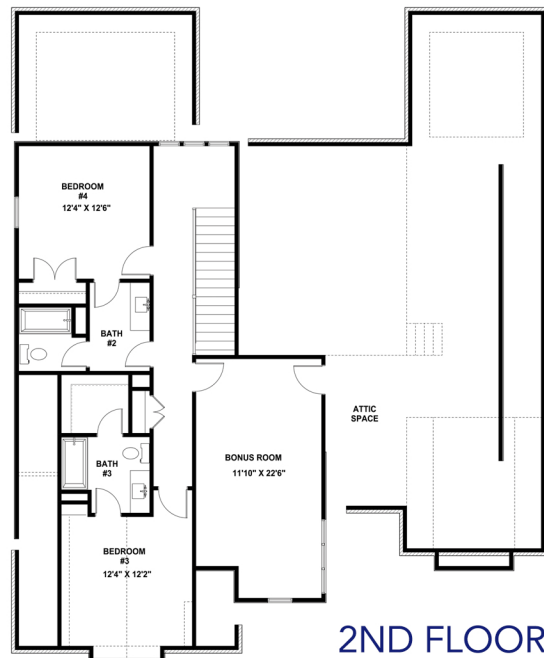
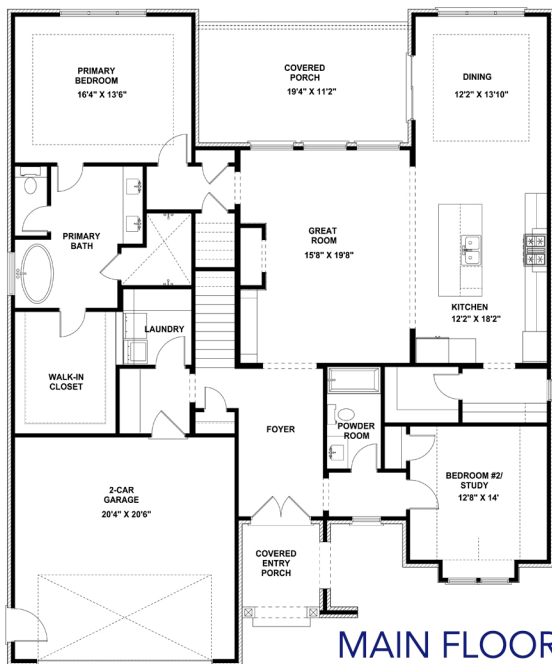


CANARY

Primary Suite on Main Floor
3026 Sq. Ft.
4 Bed • 4 Bath



- Welcome to a home to share with family and pets and enjoy with friends.
- The expansive great room anchors the main floor and is the perfect gathering spot with built-in cabinets, an elegant fireplace, and a beautiful view through large windows.
- The center island kitchen offers premium cabinetry to the ceiling, high-end kitchen appliances, a butler's pantry and a walk-in pantry ensuring plentiful counter and storage space.
- The main floor Primary bedroom, complete with walk-in closet and ensuite, ensures privacy to enjoy a quiet respite.
- A full bath and guest bedroom, mud room with drop zone, and a laundry all on the main floor offers convenience and functionality.
- 2 sizable bedrooms, each with a full bath, and a bonus room are located upstairs.
- Prime Hardin Valley location with great schools and close proximity to restaurants, breweries, retail, parks and recreation.



Brian Shelby

Realtor®

10255 Kingston Pike • Knoxville, TN 37922

(o) 865.693.3232 • (c) 865.414.5347

bnshelby71@gmail.com

License # 327468

