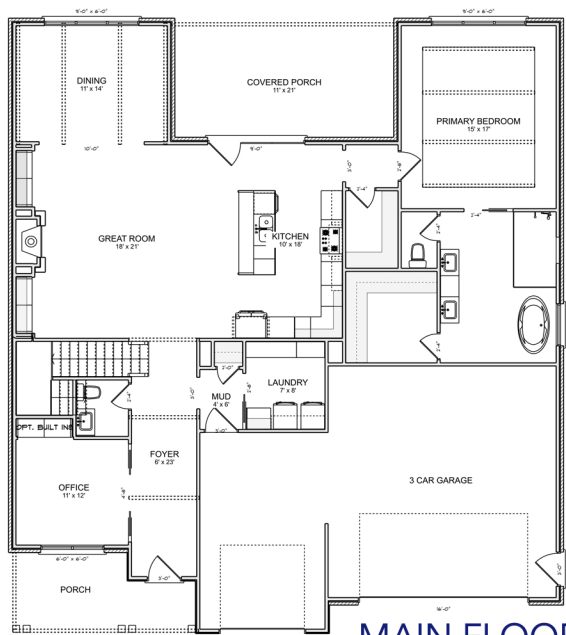




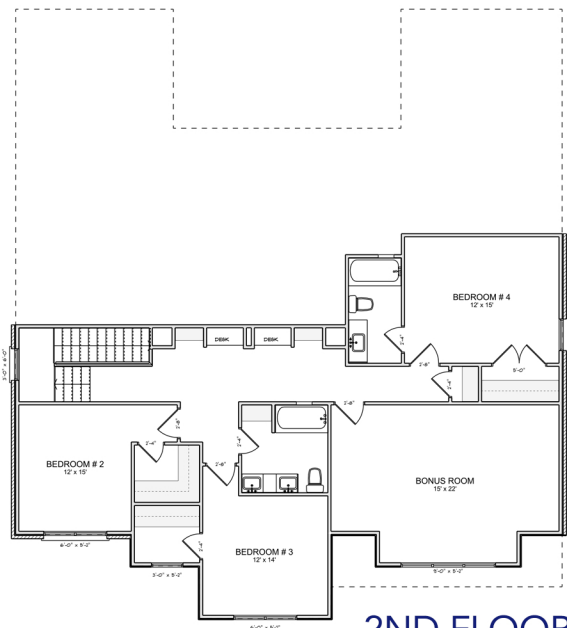
STIRLING



OWNER'S SUITE ON MAIN
3260 Sq. Ft. • 4 Bed • 3.5 Bath



MAIN FLOOR



2ND FLOOR

- Welcome to the home that combines comfort, utility, and beauty.
- The open floor plan connects all the main living areas in a fluid tradition, yet contemporary design. It is hard not to feel welcome.
- With vaulted ceilings, fireplace, and quick access to a large, covered porch, the great room is warm and inviting for all your gatherings, large or small.
- Large windows in the home office allows for the perfect spot to be inspired.
- The center island kitchen offers a lovely mix of premium cabinetry and open shelving, vaulted ceilings, and a large walk-in pantry.
- The main floor Owner's Retreat boasts a tray ceiling, 9' wide windows, luxurious bath with freestanding soaker tub, separate glass enclosed shower, double vanity, and a walk-in closet.
- Additionally, upstairs is a guest suite, 2 additional bedrooms sharing a bath with double sinks, and a bonus room.
- Prime Hardin Valley location with great schools and with close proximity to restaurants, breweries, retail, parks and recreation.



Brian Shelby

Realtor®

10255 Kingston Pike • Knoxville, TN 37922

(o) 865.693.3232 • (c) 865.414.5347

bnshelby71@gmail.com

License # 327468

