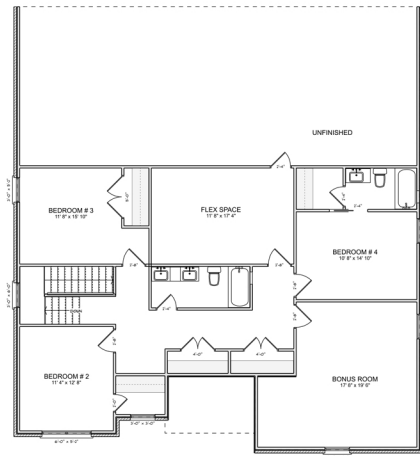
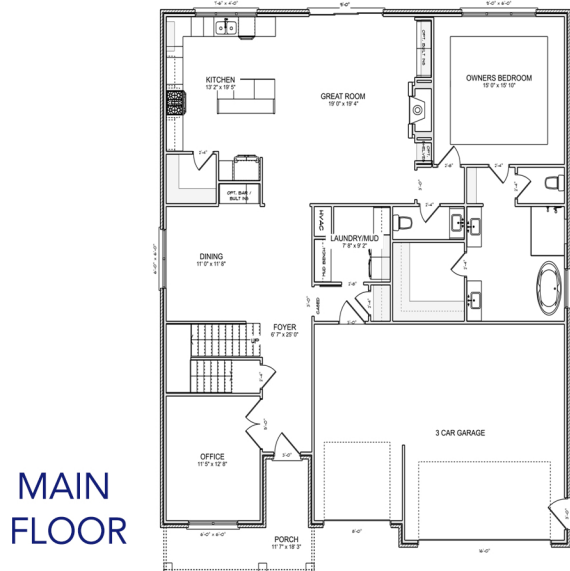




RENFREW



OWNER'S SUITE ON MAIN
3476 Sq. Ft. • 4 Bed • 3.5 Bath



- Call home this lovely Modern Farmhouse with a welcoming front porch to unwind and greet the neighbors.
- An expansive great room anchors the main floor and is the perfect gathering spot with vaulted ceilings, striking stone fireplace, and a 9' slider to the outdoors.
- The vaulted kitchen offers lots of sunlight, a mix of soft close cabinetry and open shelving, a large island, and a walk-in pantry ensuring plentiful counter and storage space.
- The dining room has plenty of room for gathering. It is open to the main living area but maintains its own space.
- The main floor Owner's Retreat makes quite a statement with a tray ceiling, large windows, freestanding soaking tub, walk-in shower, and a large double vanity with drawer and cabinet space for all your needs.
- 3 sizable bedrooms, 2 baths, and a bonus room are located upstairs for kids, guests or flex space.
- A large unfinished area can be used for storage or possibly a future media room.
- A prime Hardin Valley location means quick access to countless restaurants, breweries, retail, parks and recreation.



Brian Shelby
Realtor®

10255 Kingston Pike • Knoxville, TN 37922
(o) 865.693.3232 • (c) 865.414.5347
bnshelby71@gmail.com
License # 327468

